

Ready 4, 4L

Table of Contents

1 Introduction.....	2
1.1 Specially approved products.....	2
2 Product Description.....	3
2.1 Products included.....	3
2.2 The data plate.....	3
2.3 Product denomination.....	3
3 Spare Parts.....	5
3.1 Exploded view.....	5
3.2 List of parts.....	6

1 Introduction

Purpose of this manual

The purpose of this manual is to provide necessary information on spare parts and accessories order.

Disclaimer

Always use genuine Flygt parts. The use of other spare parts or accessories can invalidate any claims for warranty or compensation. Xylem does not take any responsibility for damages that are caused by the use of non-original parts. For more information, contact your local sales and service representative.

Data for ordering spare parts

The following information is needed for spare part orders:

- Serial number of the product
- Part number
- Quantity of bulk material, see * in tables

1.1 Specially approved products

Qualification of personnel

Only Xylem or Xylem-authorized service personnel may undertake repair work on specially approved products.

Dimensional accuracy inspection

Spare parts marked with (Ex) after the part number are subject to dimensional accuracy inspection when used in specially approved products.

2 Product Description

2.1 Products included

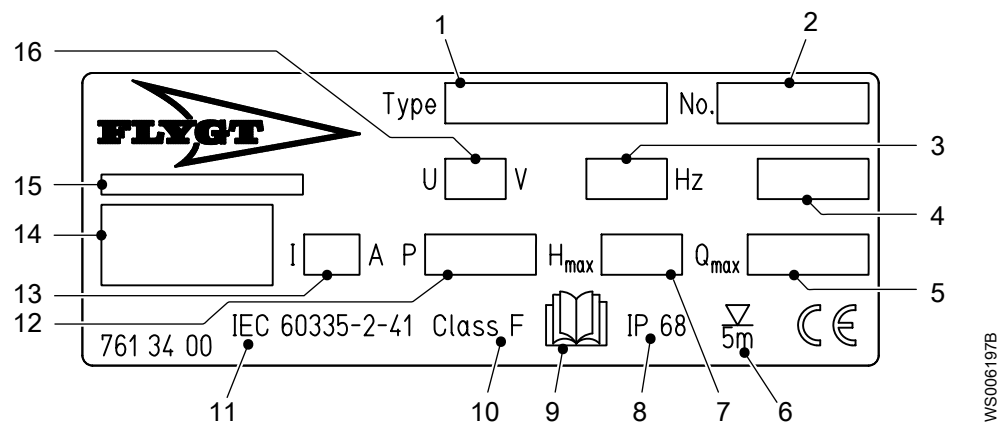
Pump model	Standard	EX	MSHA	Drainage	Sludge
Ready 4, 2004.212	X			X	
Ready 4L, 2004.230	X			X	

2.2 The data plate

Introduction

The data plate is located on the main body of the pump. The data plate lists key product specifications.

The data plate



1. Pump model
2. Serial number
3. Phase; type of current; frequency
4. Product weight
5. Maximum capacity
6. Maximum submergence
7. Maximum head
8. Degree of protection
9. Read installation manual
10. Thermal class
11. International standard
12. Rated shaft power
13. Rated current
14. Manufacturer
15. Country of origin
16. Rated voltage

W5006197B

2.3 Product denomination

Reading instruction

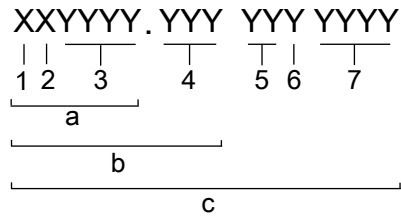
In this section, code characters are illustrated accordingly:

X = letter

Y = digit

The different types of codes are marked up with a, b and c. Code parameters are marked up with numbers.

Codes and parameters

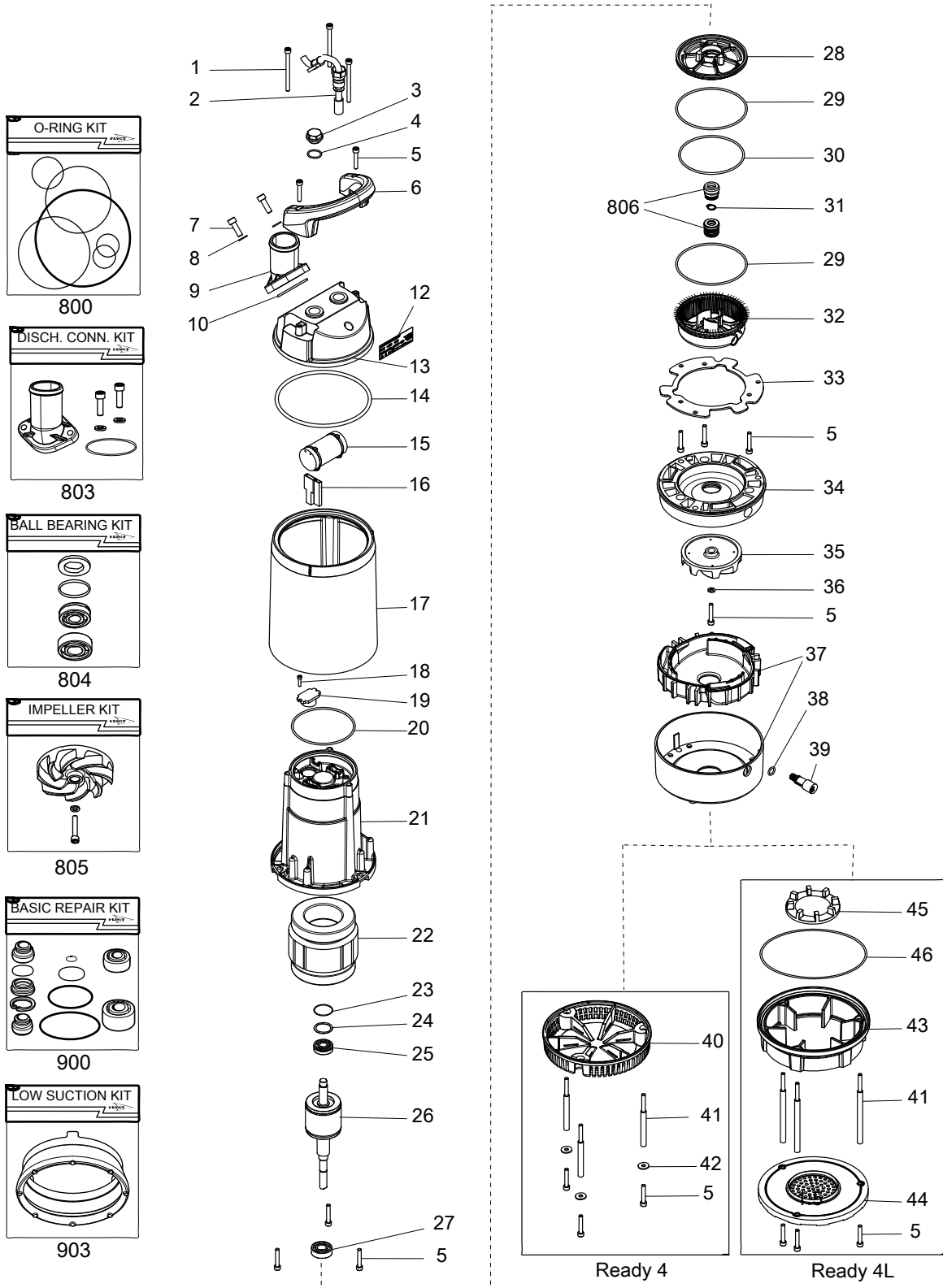


WS006265B

Type of Callout	Number	Indication
Type of code	a	Sales denomination
	b	Product code
	c	Serial number
Parameter	1	Hydraulic end
	2	Type of installation
	3	Sales code
	4	Version
	5	Production year
	6	Production cycle
	7	Running number

3 Spare Parts

3.1 Exploded view



20106D_expl_view_2004.212_2004.230

3.2 List of parts

Pos. No	Part. No	Denomination	Qty/Version	
			212	230
1	81 65 45	Hex.socket hd screw M6X80-A2-70	3	3
2	761 03 00	Motor cable unit 532.1U+H07RN-F 3X1 MM2	1	1
2	761 03 07	Motor cable unit H07RN-F 3x1	1	1
2	761 03 01	Motor cable unit SOOW-16AWG/3 115V USA CDN	1	1
2	761 03 05	Motor cable unit SOW-16AWG/3 230V USA CDN	1	1
2	761 03 04	Motor cable unit H07RN-F 3X1 MM2 110V GB	1	1
2	761 03 02	Motor cable unit H07RN-F 3X1 MM2 230V GB	1	1
2	761 03 03	Motor cable unit H07RN-F 3X1 MM2 230V AUS	1	1
3	761 05 00	Plug	1	1
4	82 76 96	O-ring 20.0X2.0 NBR	1	1
5	82 00 19	Hex.socket hd screw M6X35-A2-70	12	12
6	760 58 00	Handle	1	1
7	82 00 34	Hex.socket hd screw M8X25-A2-70	2	2
8	82 35 16	Plain washer 8.4X16X1.6-A2-140HV	2	2
9	708 99 00	Discharge connection 2"	1	1
9	708 99 02	Discharge connection ISO G2"	1	1
9	708 99 01	Discharge connection NPSM 2"	1	1
9	83 18 24	Coupling part	1	1
10	82 77 95	O-ring 52.5X3.0 NBR	1	1
12	761 34 00	Data plate	1	1
13	760 57 00	Cover	1	1
14	82 74 83	O-ring 149.3X5.7 NBR	1	1
15	84 11 81	Capacitor 30 MFD 275V	1	1
15	84 11 80	Capacitor 14 MFD 450V	1	1
15	84 11 79	Capacitor 12 MFD 450V	1	1
16	83 44 11	Terminal device 48X12X6 MAX.380V 18A	1	1
16	83 44 12	Terminal device 54X21X8.5 MAX.380V 18A	1	1

Pos. No	Part. No	Denomination	Qty/Version	
			212	230
17	760 56 00	Cooling jacket ALUMINUM	1	1
18	81 99 86	Hex.socket hd screw M4X16-A2-70	1	1
19	84 03 25	Motor switch 115V 50HZ	1	1
		Stator 1-phase 50 Hz 2-poles 115V Thermal contact		
19	84 03 26	Motor switch 230V 50HZ	1	1
		Stator 1-phase 50 Hz 2-poles 230V-240V		
19	84 03 29	Motor switch 115V 60HZ	1	1
		Stator 1-phase 60 Hz 2-poles 115V Thermal contact		
19	84 03 32	Motor switch 230V 60HZ	1	1
		Stator 1-phase 60 Hz 2-poles 220V-230V Thermal contact		
20	82 74 73	O-ring 99.5X3.0 NBR	1	1
21	760 55 00	Stator housing	1	1
22	690 41 01	Stator 12-05-2b	1	1
		1-phase 60 Hz 2-poles 115V Thermal contact		
		1-phase 50 Hz 2-poles 115V Thermal contact		
22	690 41 02	Stator 12-05-2b	1	1
		1-phase 50 Hz 2-poles 230V-240V 1-phase 60 Hz 2-poles 220V-230V Thermal contact		
23	82 56 23	Spring washer 31.5X25X0.35	1	1
24	82 77 19	O-ring 26.0X1.2 NBR	1	1
25	83 51 47	Ball bearing 12X32X10	1	1
26	761 02 00	Shaft unit	1	1
27	83 32 42	Ball bearing 15X35X11	1	1
28	761 54 00	Bearing housing	1	1
29	82 74 76	O-ring 114.5X3.0 NBR	2	2
30	82 74 74	O-ring 104.5X3.0 NBR	1	1
31	82 60 84	Retaining ring	1	1
32	561 48 01	Oil housing	1	1
33	761 56 00	Washer 114.7X175.5X3	1	1
34	561 54 00	Wear protection	1	1
35	561 53 10	Torque flow impeller	1	1
		MT 50Hz 1-phase Curve code: 200		
35	561 53 11	Torque flow impeller	1	1
		MT 60Hz 1-phase Curve code: 204		
36	82 37 09	Plain washer 6.7X14X3-A2-140HV	1	1
37	625 38 00	Diffuser unit	1	1
38	82 73 82	O-ring 10.3X2.4 NBR	1	1
39	561 50 02	Inspection screw	1	1
40	661 35 00	Strainer	1	
41	760 59 00	Barrel nut	3	
41	760 59 01	Barrel nut		3
42	82 37 93	Plain washer 6.4X18X1.6-A4-170HV	3	3
43	791 67 00	Low suction cuff		1
44	791 68 00	Strainer low-suction		1
45	791 69 00	Valve		1
46	82 78 34	O-ring 170X3 NBR		1
800	769 66 00	O-ring kit		1
		NBR		
803	714 85 00	Discharge conn. kit 2"	1	1

Pos. No	Part. No	Denomination	Qty/Version		
			212	230	
803	714 85 01	Discharge conn. kit NPSM 2"	1	1	
803	714 85 02	Discharge conn. kit G2"	1	1	
804	618 17 00	Ball bearing kit	1	1	
	804,1 82 56 23	Spring washer 31.5X25X0.35	1	1	
	804,2 82 77 19	O-ring 26.0X1.2 NBR	1	1	
	804,3 83 32 42	Ball bearing 15X35X11	1	1	
	804,4 83 51 47	Ball bearing 12X32X10	1	1	
805	769 67 00	Impeller kit	50Hz Curve code: 200	1	1
805	769 67 01	Impeller kit	60Hz Curve code: 204	1	1
806	618 16 00	Seal kit COMPLETE	TYPE B CARBON/AL2O3	1	1
807	621 02 00	Outer seal kit	TYPE B RSIC/RSIC	1	1
808	769 68 00	Diffuser kit		1	1
814	761 32 00	Level switch kit EU		1	1
814	761 32 01	Level switch kit CSA UL		1	1
900	793 20 00	Basic repair kit		1	1
903	633 07 00	Low suction kit		1	



ООО «Бауманс Груп» - официальный партнер фирмы Flygt в России.

Тел: +7 495 121 49 50

Эл. почта: info@baumgroup.ru

Сайт: www.baumgroup.ru